



Animal Health Catalogue

Peripheral IV catheters





Peripheral IV catheters (PIVCs)

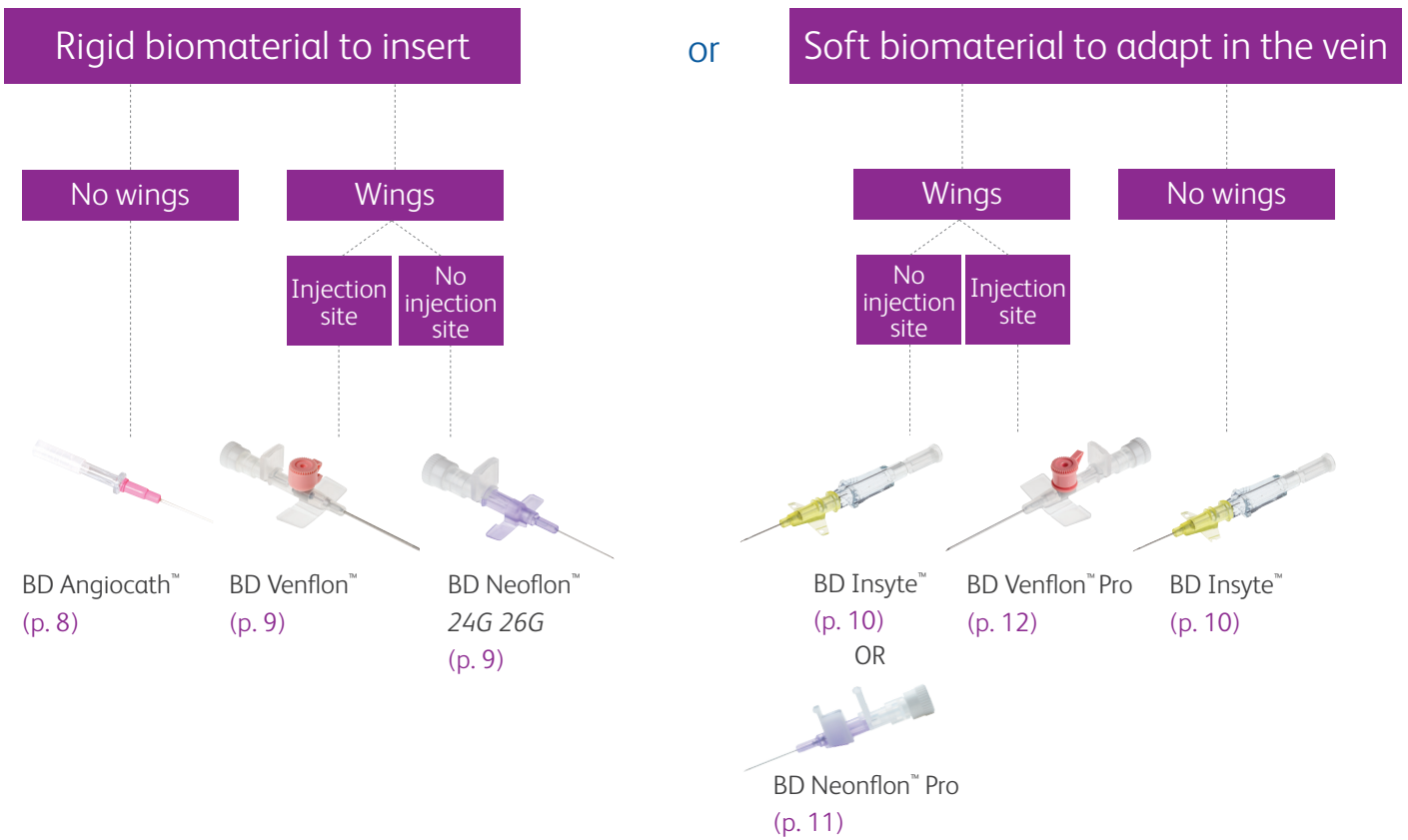
Our range of PIVCs leverage proprietary technologies and advanced features to help you optimize patient care and improve clinical outcomes. We specifically developed them based on veterinarians needs, as understanding these needs is a key priority at BD.



Catheter Size Examples

Color	Gauge	Animal
Orange	14G	Horse
Pink	20G	Dog
Blue	22G	Cat / small dog
Yellow	24G	Kitten
Purple	26G	Animal < 1Kg

Catheter Tree Selection Guide



Safety catheter



Color-coding and corresponding sizes of cannula/catheter

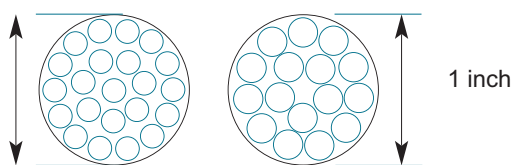
Outside Diameter of Catheter in mm	Range of Actual Outside Diameter in mm	Color ¹	Gauge ²
0.6	0.550 to 0.649	Purple	26
0.7	0.650 to 0.749	Yellow	24
0.8; 0.9	0.750 to 0.949	Blue	22
1.0; 1.1	0.950 to 1.149	Pink	20
1.2; 1.3	1.150 to 1.349	Green	18
1.4; 1.5	1.350 to 1.549	White	17
1.6; 1.7; 1.8	1.550 to 1.849	Grey	16
1.9; 2.0; 2.1; 2.2	1.850 to 2.249	Orange	14
2.3; 2.4; 2.5	2.250 to 2.549	Red	13
2.6; 2.7; 2.8	2.550 to 2.849	Light Blue	12
3.3; 3.4	3.250 to 3.549	Light Brown	10

- 1) The color may be opaque or translucent
- 2) The color-coding is usually applied to the catheter hub or to an integral fitting
- 3) The use of gauge numbers is optional

Cannula/Catheter Conversions

Outer Diameters/Gauge-French Sizes

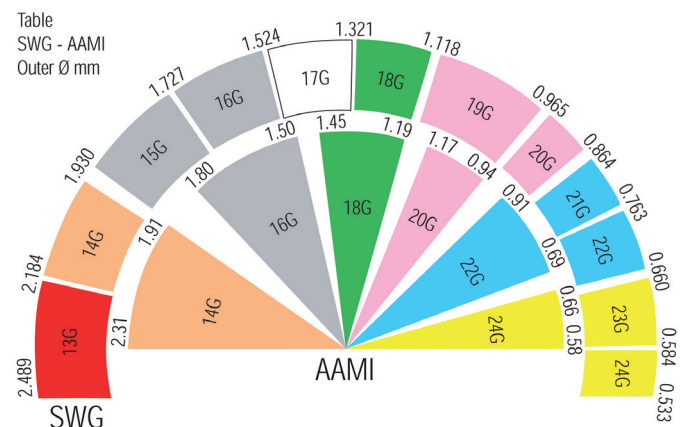
The definition of gauge measurement comes from the AAMI (Association for the Advancement of Medical Instrumentation - USA). This states how many cannula fit into a tube with an inner diameter of 1" (1 inch = 25.4mm).



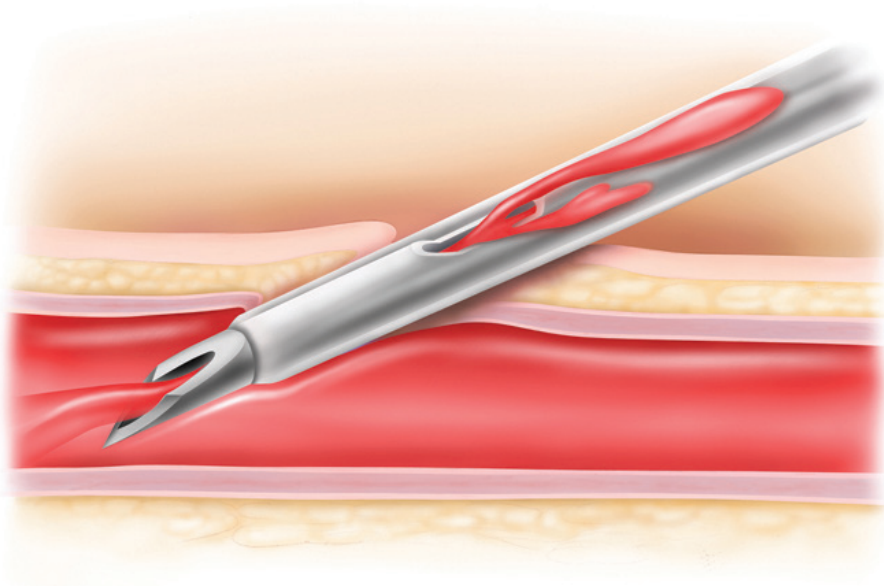
The AAMI uses even numbers (18, 20, 22, etc.) as measuring units.

A similar measurement definition exists in Great Britain and this is known as the SWG (Standard Wire Gauge). The SWG uses consecutive numbers (i.e., 13 to 24) and is the common method of measurement for catheters in Europe.

The Charriere, commonly known as French, relates directly to the catheter size, i.e., 1Ch = 0.33mm. In the following table, the measurements of the AAMI - SWG - French are shown in relation to the outer \varnothing in mm.



BD Instaflash™ Needle Technology - designed to increase first-stick success



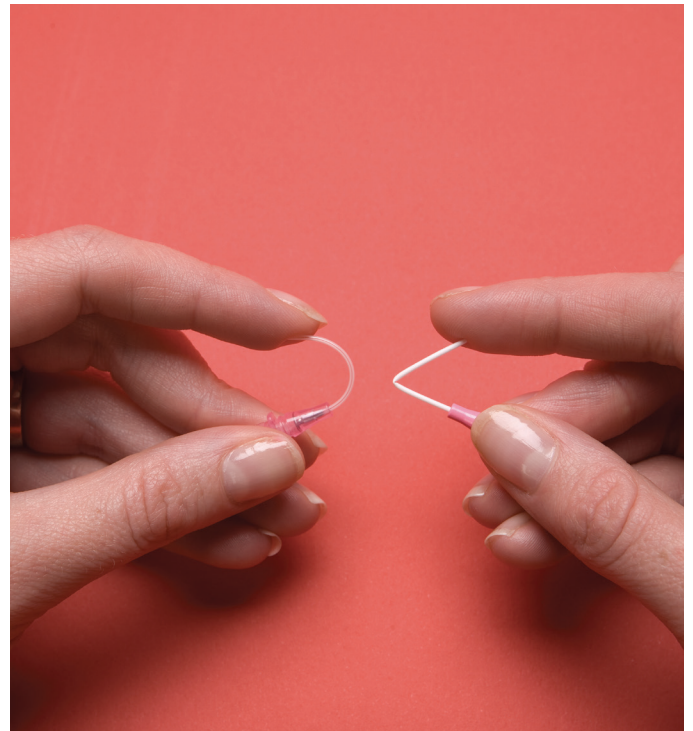
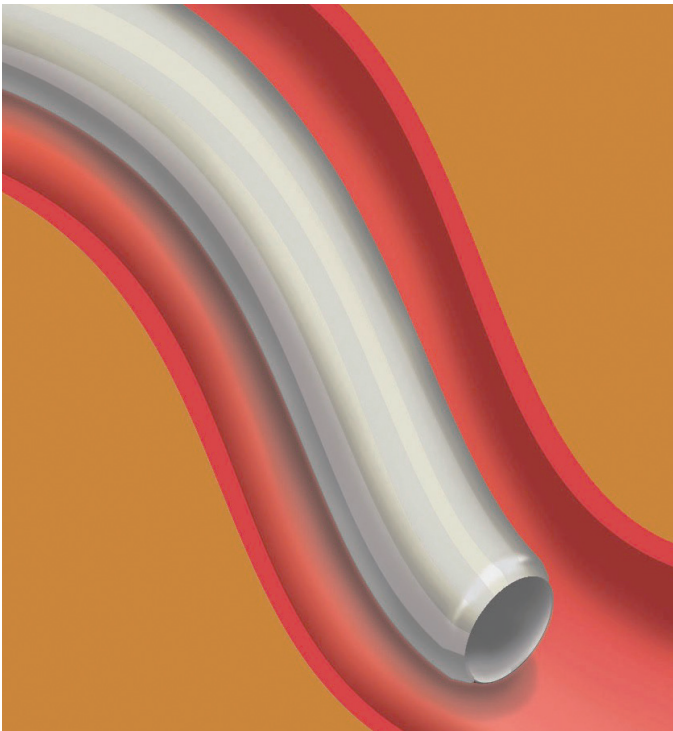
- A successful first-stick is important for both the user and the animal, especially when accessing small and compromised veins
- BD Instaflash™ needle technology immediately confirms vessel entry at the point of insertion and is designed to improve insertion success, therefore reducing insertion attempts
- Additional assurance of vessel entry is provided through continuous flashback and clear visibility of blood flow along the extension tubing

Products featuring BD Instaflash™ technology

- BD Insyte™
- BD Insyte™ Autoguard™
- BD Neoflon™ Pro Safety
- BD Venflon™ Pro Safety with BD Instaflash™
- BD Neoflon™ Pro

BD Vialon™ biomaterial

- BD Vialon™ biomaterial is a unique, proprietary polyurethane, developed specially for vascular access
- Its unique properties allow BD Vialon™ material to soften up to 70%³ in the vein, enabling longer dwell times and reducing the chance of mechanical phlebitis by up to 50%⁴
- The insertion characteristics of BD Vialon™ biomaterial catheters make them easier to place and advance^{3,5}
- Has a good kink resistance with high flexibility



Products manufactured with BD Vialon™

- BD Venflon™ Pro
- BD Venflon™ Pro Safety
- BD Insyte™
- BD Insyte™ Autoguard™
- BD Venflon™ Pro Safety with BD Instaflash™ (see page 6)
- BD Neoflon™ Pro

BD Angiocath™ peripheral IV catheter

- Made of radiopaque FEP Fluorinated Ethylene Propylene
- Triple-bevel needle
- Thermo-moulded bevel ensures good penetration properties
- Recommended for infusion, transfusion, angiography
- Transparent clear flashback chamber
- Available in longer lengths (14 G and 16 G available with 83 mm and 133 mm long catheters)
- 12 G and 10 G allows high flow rates
- BD Luer-Lok™ compatible
- Sterile, single use



Gauge	Catheter Length (mm)	Outer diameter (mm)	Flow Rate (ml/min)	Color Code	Shelf Box / Shipping Case	Reference
24 G	19	0.7	17	Yellow	50 / 200	381112
22 G	25	0.9	28	Blue	50 / 200	381123
20 G	30	1.1	49	Pink	50 / 200	381134
20 G	48	1.1	42	Pink	50 / 200	381137
18 G	30	1.3	86	Green	50 / 200	381144
18 G	48	1.3	79	Green	50 / 200	381147
16 G	30	1.7	156	Grey	50 / 200	381154
16 G	48	1.7	147	Grey	50 / 200	381157
16 G	83	1.7	127	Grey	10 / 50	382258
16 G	133	1.7	108	Grey	10 / 50	382259
14 G	30	2.1	295	Orange	50 / 200	381164
14 G	48	2.1	277	Orange	50 / 200	381167
14 G	83	2.1	249	Orange	10 / 50	382268
14 G	133	2.1	219	Orange	10 / 50	382269
12 G	76	2.8	449	Light Blue	10 / 50	382277
10 G	76	3.4	609	Tan	10 / 50	382287

BD Venflon™ peripheral PTFE IV catheter with injection site

- Integrated injection port and one-way valve for peripheral cannulation
- Touch contamination free injection port cap
- Permits needle-free administration of bolus medications during infusion
- Back-cut needle bevel and dual tapered end of the Polytetrafluoroethylene (PTFE) catheter allows easier insertion and minimizes the risks of vein damage
- No dead volume when injecting/infusing
- BD Luer-Lok™ compatible
- Sterile, single use



Gauge	Catheter Length (mm)	Outer diameter (mm)	Flow Rate (ml/min)	Color Code	Shelf Box / Shipping Case	Reference
22 G	25	0.8	31	Blue	50 / 500	391451
20 G	32	1.0	54	Pink	50 / 500	391452
18 G	32	1.2	80	Green	50 / 500	391457
18 G	45	1.2	80	Green	50 / 500	391453
17 G	45	1.4	125	White	50 / 500	391454
16 G	45	1.7	180	Grey	50 / 500	391455
14 G	45	2.0	270	Orange	50 / 500	391456

BD Neoflon™ peripheral IV catheter

- 24 G and 26 G PTFE catheter for the puncture of small fragile vessels
- Detachable wing holder makes the catheter easier to hold, using either a ported or nonported grip
- The flexible wings facilitate secure fixation, without the need to immobilize the limb, thus aim to reduce catheter movement relative to the vessel, which is major factor in development of phlebitis
- Sterile, single use

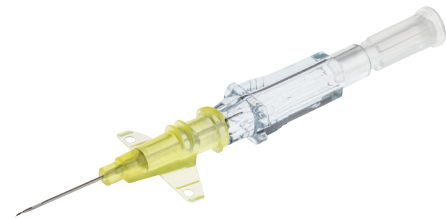


BD Neoflon™ 26 G offers an identical internal diameter and flow rate characteristics to BD Neoflon™ 24 G. The clinical advantage of 26 G cannula lies with the smaller external diameter, which improves the vein to cannula ratio.

Gauge	Catheter Length (mm)	Outer diameter (mm)	Flow Rate (ml/min)	Color Code	Shelf Box / Shipping Case	Reference
24 G	19	0.7	13	Yellow	50 / 500	391350
26 G	19	0.6	13	Purple	50 / 500	391349

BD Insyte™ straight IV catheter

- Thin-walled catheter with high flow rates
- Includes all the benefits of BD Vialon™ (see page 7)
- Sterile, single use



Straight

Gauge	Catheter Length (mm)	Outer diameter (mm)	Flow Rate (ml/min)	Color Code	Shelf Box / Shipping Case	Reference
24 G	19	0.7	24	Yellow	50 / 200	381212
22 G	25	0.9	36	Blue	50 / 200	381223
20 G	30	1.1	60	Pink	50 / 200	381234
20 G	48	1.1	55	Pink	50 / 200	381237
18 G	30	1.3	105	Green	50 / 200	381244
18 G	48	1.3	95	Green	50 / 200	381247
16 G	45	1.7	215	Grey	50 / 200	381257
14 G	45	2.1	330	Orange	50 / 200	381267

Winged

Gauge	Catheter Length (mm)	Outer diameter (mm)	Flow Rate (ml/min)	Color Code	Shelf Box / Shipping Case	Reference
24 G	19	0.7	25	Yellow	50 / 200	381312
22 G	25	0.9	35	Blue	50 / 200	381323
20 G	30	1.1	60	Pink	50 / 200	381334
20 G	48	1.1	55	Pink	50 / 200	381337
18 G	30	1.3	105	Green	50 / 200	381344
18 G	48	1.3	95	Green	50 / 200	381347
16 G	45	1.7	215	Grey	50 / 200	381357

BD Insyte-N™ straight IV catheter

- 14 mm long, the shortest on the market to accommodate small vein segments and provides a greater choice of insertion sites
- Recommended for fragile veins and low venous pressure
- BD Luer-Lok™ compatible
- Includes all the benefits of BD Vialon™ (see page 7)
- Sterile, single use

Straight

Gauge	Catheter Length (mm)	Outer diameter (mm)	Flow Rate (ml/min)	Color Code	Shelf Box / Shipping Case	Reference
24 G	14	0.7	24	Yellow	50 / 200	381211

Winged

Gauge	Catheter Length (mm)	Outer diameter (mm)	Flow Rate (ml/min)	Color Code	Shelf Box / Shipping Case	Reference
24 G	14	0.7	24	Yellow	50 / 200	381311

BD Neoflon™ Pro IV catheter

- Feature a shorter needle and softer cannula that features a tapered tip and proprietary lube system to help minimize insertion discomfort*
- BD Instaflash™ (see page 6) needle technology incorporates a notched needle, which is designed to improve insertion success
- Its unique properties allow BD Vialon™ (see page 7) material to soften up to 70%³ in the vein, enabling longer dwell times and reducing the chance of mechanical phlebitis by up to 50%⁴
- Removable wing clip for a familiar insertion technique



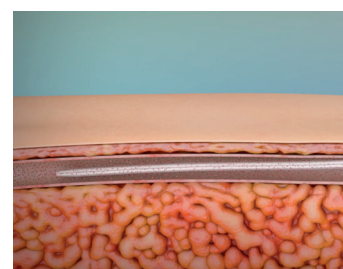
BD Instaflash™
needle technology



Removable wing clip



BD Vialon™
catheter material



Gauge	Catheter Length (mm)	Outer Diameter (mm)	Flow Rate (ml/min)	Color Code	Shelf Box / Shipping Case	Reference
24 G	19	0.72	19	Yellow	50 / 500	391380
26 G	19	0.62	14	Purple	50 / 500	391379



BD Neoflon™ Pro IV Catheter 24 gauge



BD Neoflon™ Pro IV Catheter 26 gauge

* Compared to a non-tapered tip

BD Venflon™ Pro peripheral IV catheter with injection site

- Familiar ported design with 'snap-cap' aim to add non-touch technique which helps prevent port being inadvertently left open
- Flexible wings stabilize the cannula in the vein and provide comfortable securement for the patient
- Grip is ergonomically designed to allow for a variety of user techniques and to aid insertion
- Includes all the benefits of BD Vialon™ (see page 7)
- BD Luer-Lok™ compatible
- Sterile, single use



Gauge	Catheter Length (mm)	Outer Diameter (mm)	Flow Rate (ml/min)	Color Code	Shelf Box / Shipping Case	Reference
22 G	25	0.9	42	Blue	50 / 500	393202
20 G	32	1.1	67	Pink	50 / 500	393204
18 G	32	1.3	103	Green	50 / 500	393206
18 G	45	1.3	103	Green	50 / 500	393207
17 G	45	1.5	133	White	50 / 500	393208
16 G	45	1.8	236	Grey	50 / 500	393209
14 G	45	2.0	270	Orange	50 / 500	393210

BD Venflon™ Pro Safety peripheral safety IV catheter with injection site

- BD Venflon™ Pro Safety needle protected IV cannula combines all the advantages of the original BD Venflon™ Pro, with second generation safety protection features against needlestick injuries
- Needle shield
 - once activated, the needle tip is fully encapsulated inside the protection mechanism
 - captures residual blood safely within the device and minimizes the risk of unanticipated blood splatter during and after activation¹
 - with needle safely encased in smooth edged plastic shield
- Includes all the benefits of BD Vialon™ (see page 7)
- Sterile, disposable, single use



Gauge	Catheter Length (mm)	Outer diameter (mm)	Flow Rate (ml/min)	Color Code	Shelf Box / Shipping Case	Reference
22 G	25	0.9	42	Blue	50 / 500	393222
20 G	32	1.0	67	Pink	50 / 500	393224
18 G	32	1.2	103	Green	50 / 500	393226
18 G	45	1.2	103	Green	50 / 500	393227
17 G	45	1.5	133	White	50 / 500	393228
16 G	45	1.8	236	Grey	50 / 500	393229
14 G	45	2.0	270	Orange	50 / 500	393230



BD Venflon™ Pro Safety shielded IV catheter with BD Instaflash™ Needle Technology

- Familiar ported design with 'snap-cap' aids non-touch technique which helps prevent port being inadvertently left open
- Sharp needle technology provides both ease of penetration and improved comfort
- Flexible wings stabilize the cannula in the vein and provide comfortable securement for the patient
- Grip is ergonomically designed to allow for a variety of user techniques and to aid insertion
- BD Instaflash™ needle technology (see page 6) needle technology immediately confirms vessel entry at the point of insertion and is designed to improve insertion success
- Includes all the benefits of BD Vialon™ (see page 7) and BD Venflon™ Pro Safety
- Sterile, single use



Gauge	Catheter Length (mm)	Outer Diameter (mm)	Flow Rate (ml/min)	Color Code	Shelf Box / Shipping Case	Reference
22 G	25	0.9	42	Blue	50 / 500	393280
20 G	32	1.1	67	Pink	50 / 500	393281
18 G	32	1.3	103	Green	50 / 500	393282
18 G	45	1.3	103	Green	50 / 500	393283

BD Insyte™ Autoguard™ peripheral safety straight IV catheter

- Push-button shielding technology proven to reduce needlestick injuries by 95 % vs. a non-safety catheter²
- Provides safe handling of a withdrawn needle without reducing its ease of insertion⁶
- Pressing the push-button releases the spring so that the needle/flashback chamber retracts into the safety barrel
- BD Luer-Lok™ compatible
- Includes all the benefits of BD Vialon™ (see page 7)
- BD Instaflash™ needle technology immediately confirms vessel entry at the point of insertion and is designed to improve insertion success
- Sterile, single use



Straight

Gauge	Catheter Length (mm)	Outer diameter (mm)	Flow Rate (ml/min)	Color Code	Shelf Box / Shipping Case	Reference
24 G	19	0.7	20	Yellow	50 / 200	381812
22 G	25	0.9	35	Blue	50 / 200	381823
20 G	25	1.1	65	Pink	50 / 200	381833
20 G	30	1.1	60	Pink	50 / 200	381834
20 G	48	1.1	55	Pink	50 / 200	381837
18 G	30	1.3	105	Green	50 / 200	381844
18 G	48	1.3	95	Green	50 / 200	381847
16 G	30	1.7	220	Grey	50 / 200	381854
16 G	45	1.7	205	Grey	50 / 200	381857
14 G	45	2.1	330	Orange	50 / 200	381867

Winged

Gauge	Catheter Length (mm)	Outer diameter (mm)	Flow Rate (ml/min)	Color Code	Shelf Box / Shipping Case	Reference
24 G	19	0.7	20	Yellow	50 / 200	381912
22 G	25	0.9	35	Blue	50 / 200	381923
20 G	30	1.1	65	Pink	50 / 200	381933
20 G	30	1.1	60	Pink	50 / 200	381934
20 G	48	1.1	55	Pink	50 / 200	381937
18 G	30	1.3	105	Green	50 / 200	381944
18 G	48	1.3	95	Green	50 / 200	381947
16 G	30	1.7	220	Grey	50 / 200	381954
16 G	45	1.7	205	Grey	50 / 200	381957

BD Insyte-N™ Autoguard™ straight IV catheter

- 14 mm long, the shortest on the market to accommodate small vein segments and provides a greater choice of insertion sites
- Recommended for fragile veins and low venous pressure
- BD Luer-Lok™ compatible
- Includes all the benefits of BD Instaflash™ (see page 6) and BD Vialon™ (see page 7) technology
- Sterile, single use



Straight

Gauge	Catheter Length (mm)	Outer diameter (mm)	Flow Rate (ml/min)	Color Code	Shelf Box / Shipping Case	Reference
24 G	14	0.7	20	Yellow	50 / 200	381811

Winged

Gauge	Catheter Length (mm)	Outer diameter (mm)	Flow Rate (ml/min)	Color Code	Shelf Box / Shipping Case	Reference
24 G	14	0.7	20	Yellow	50 / 200	381911

1. Rosenthal VD, Hughes G. Fluid dispersal from safety cannulas: an in vitro comparative test. *Am J Infect Control*. 2015;43(3):305–307.
2. Mendelson MH, Lin-Chen BY, Finkelstein-Blond L, Bailey E, Kogan G. Evaluation of a safety IV catheter (IVC) (Becton Dickinson, Insite Autoguard): final report [abstract]. *Eleventh Annual Scientific Meeting Society for Healthcare Epidemiology of America*. 2001.
3. BD, data on file 0000MS07610. 23 October 2016.
4. Maki DG, Ringer M. Risk factors for infusion-related phlebitis with small peripheral venous catheters. *Annals of Internal Medicine*. 1991;114:845–854.
5. Gaukroger PB, Roberts JG, Manners TA. Infusion thrombophlebitis: a prospective comparison of 645 Vialon and Teflon cannulae in anaesthetic and postoperative use. *Anaesthesia and Intensive Care*. 1988;16:265–271.
6. Asai T, Matsumoto S, Matsumoto H, Yamamoto K, Shingu K. Prevention of needle-stick injury. Efficacy of a safeguarded intravenous cannula. *Anaesthesia*. 1999;54(3):258–261.

BD Switzerland Sàrl, Terre Bonne Park – A4, Route de Crassier 17, 1262 Eysins, Switzerland
Tel: +41 21 556 30 00

bd.com

